



Light-Up Skull Eyes T-Shirt

Make your Halloween skull shirt scarier than ever by adding glowing eyes!

Written By: Natasha Dzurny



INTRODUCTION

Make your Halloween skull shirt scarier than ever by adding glowing eyes! This sewing project uses two LEDs and a Blink/Fade Board to give a shirt glowing eyes. You'll only need simple sewing skills and a little bit of time to create this fun wearable.



TOOLS:

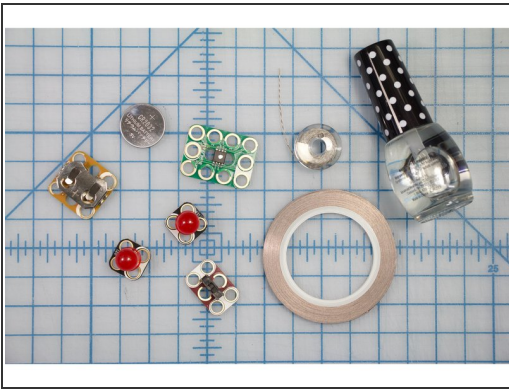
- [Scissors](#) (1)
- [Clear Nail Polish](#) (1)
- [An Awesomely Scary T-Shirt](#) (1)
- [Sewing Thread](#) (1)
- [Sewing Needle](#) (1)



PARTS:

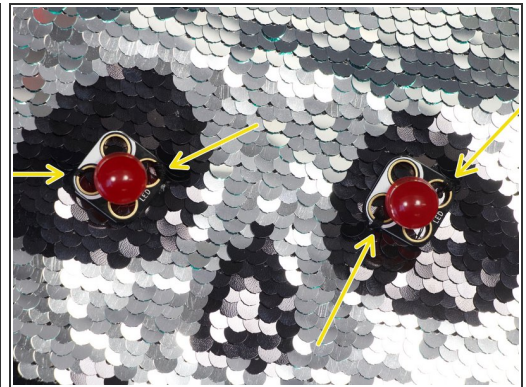
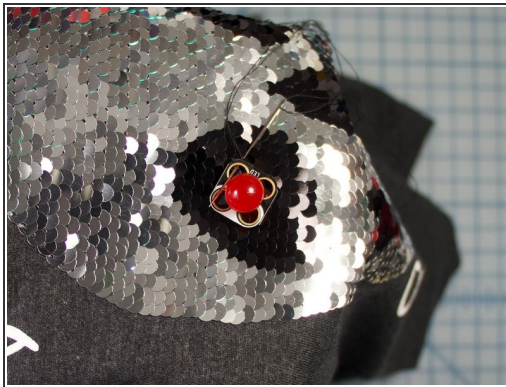
- [Crazy Circuits LED Chip](#) (2)
- [Crazy Circuits Blink/Fade Board](#) (1)
- [Crazy Circuits Coin Cell Battery Holder](#) (1)
- [Conductive Thread](#) (1)
- [crazy circuits switch](#) (1)

Step 1 — Light-Up Skull Eyes T-Shirt



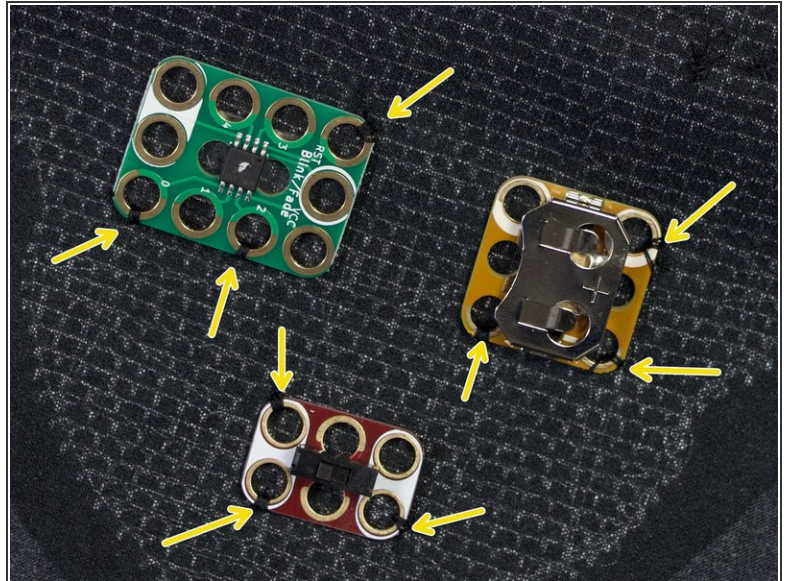
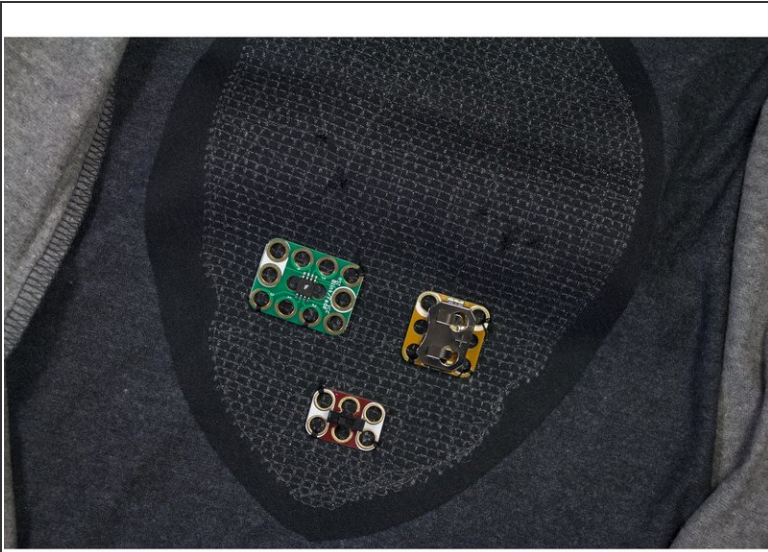
- Gather your materials
- Choose a shirt! [We found ours at Target.](#)

Step 2



- Thread a needle with black thread.
 - Place the Red LEDs over the eyes.
 - Stitch the LEDs onto the shirt where shown.
- i** Tip: It can be a bit tricky to hold the LED, the shirt, and the needle while sewing. Use a tiny piece of double sided tape to tack the LED in place while you are stitching.

Step 3



- Turn the shirt inside out.
 - Tack the other components to the shirt where shown, through at least three of the holes.
- i** It is important that you place the components exactly as the picture shows. Be sure that the negative side of the battery component and holes 4 & 3 on the blink/fade board are facing up, or toward the collar of the shirt.

Step 4



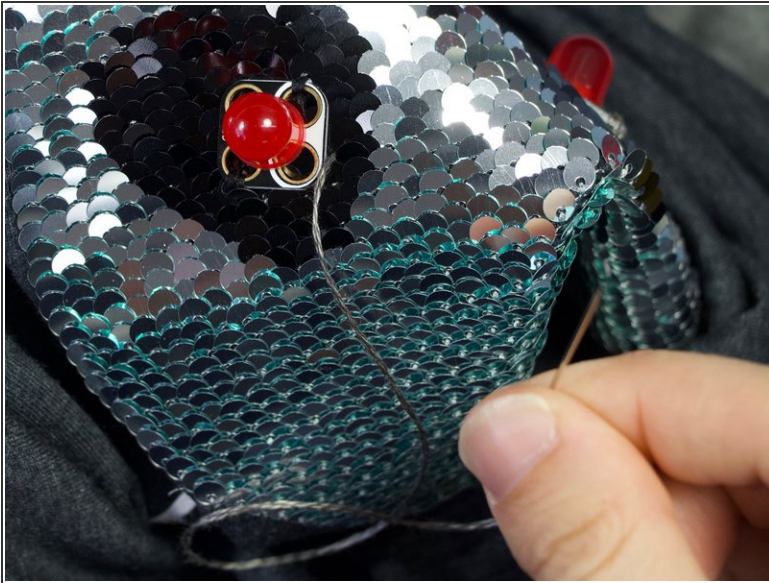
- Turn the shirt right side out.
- Thread your needle with conductive thread.
- Sew a few finishing knots to the negative hole of the first red LED to make a good connection. End with the thread on the inside of the shirt. DO NOT cut the thread.

Step 5



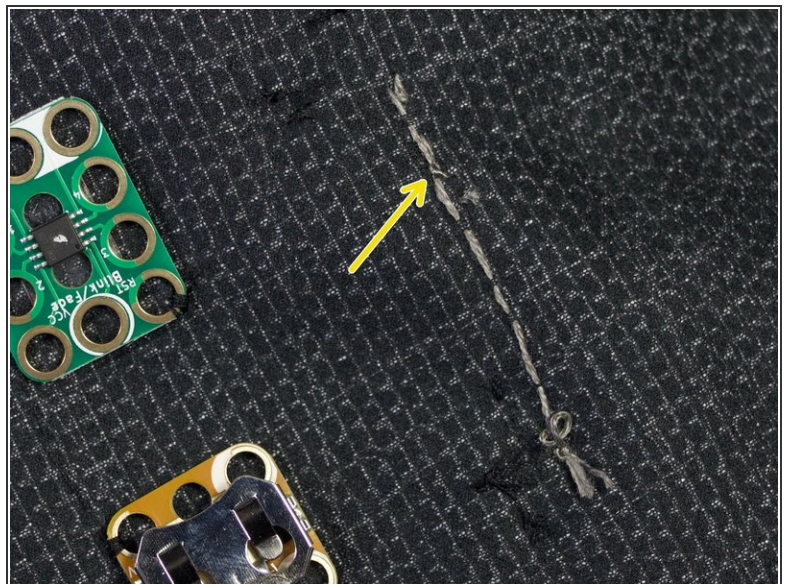
- Turn the shirt inside out. Sew a running stitch to the location of the negative hole on the second led.
- End with the thread on the outside of the shirt. DO NOT cut the thread.

Step 6



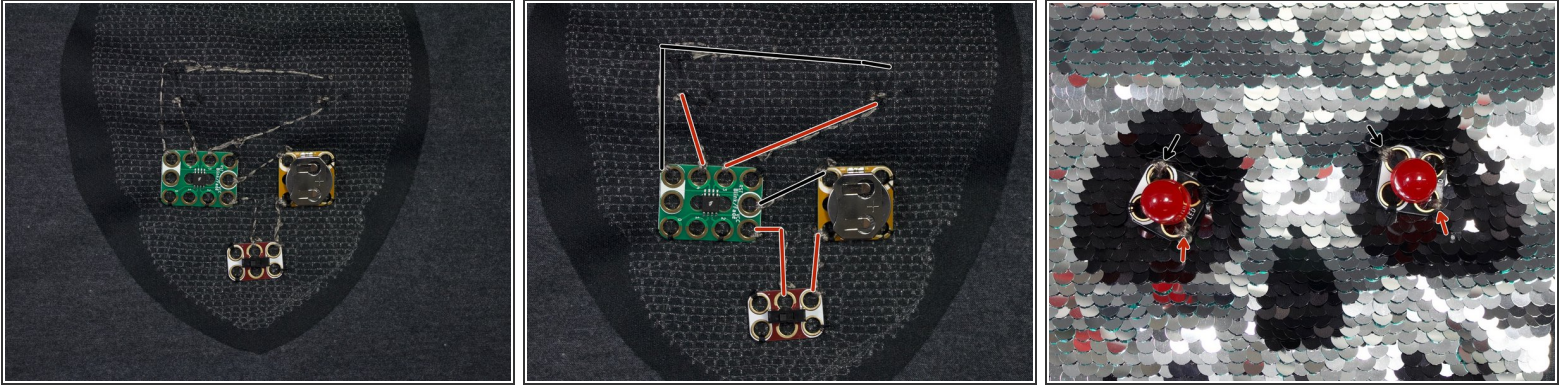
- Turn the shirt right side out. Sew a few finishing stitches to the negative hole of the second LED.
- End with the thread on the inside of the shirt. DO NOT cut the thread.

Step 7



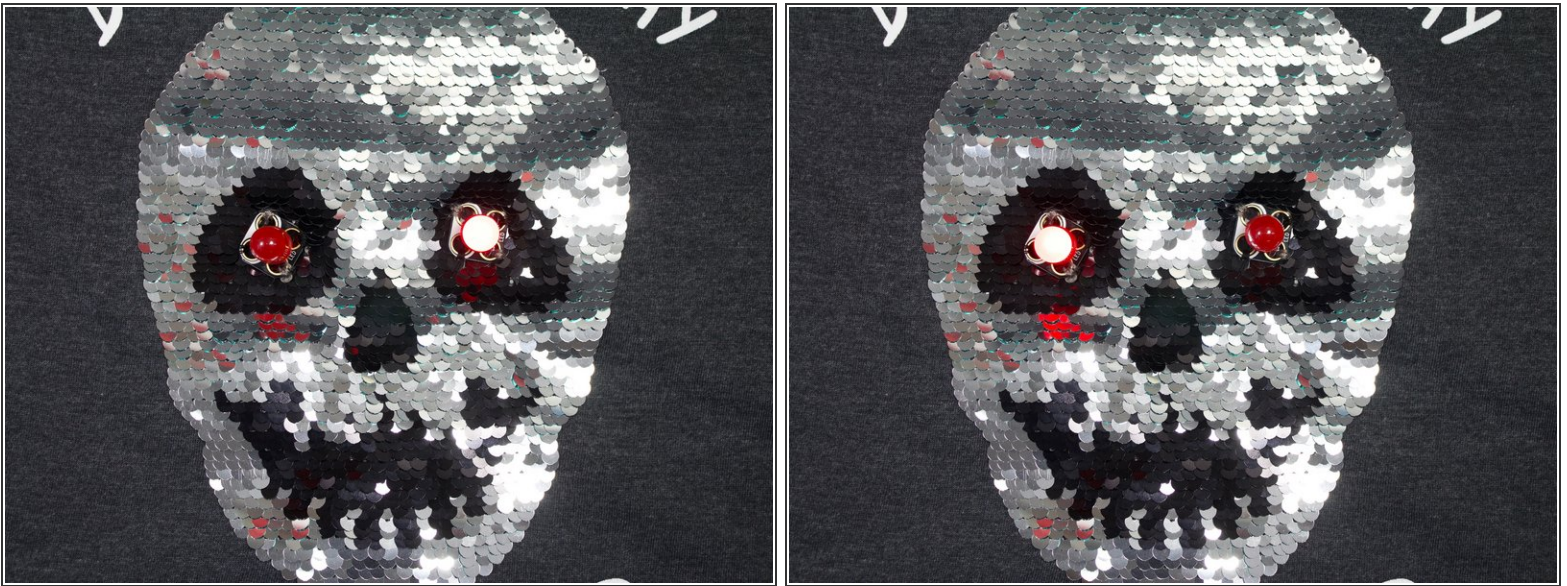
- Turn the shirt inside out. Stitch the thread back along the path. Tie a knot and trim the thread as shown.

Step 8



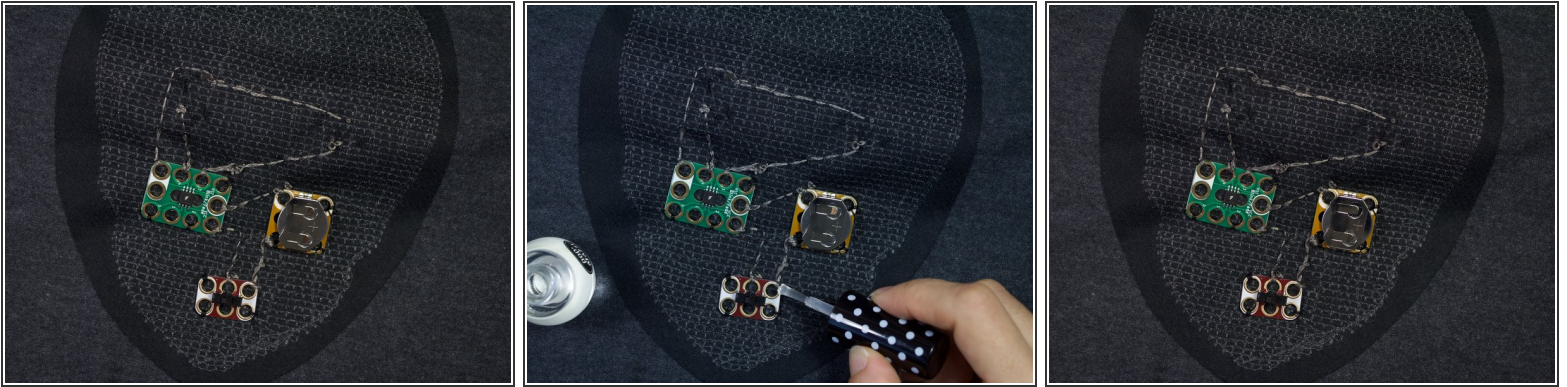
- Continue to make the rest of the connections as shown.

Step 9



- Turn the shirt right side out.
- Turn on the switch - you should have a blinking skull!

Step 10



- Once you have a working circuit, turn the shirt inside out one more time.
- Apply clear nail polish or crazy glue to any knot or connection to the crazy circuits components. This will ensure your circuit will continue to work over time.

Step 11



- You're ready to scare!