



Bat Wand

Use the printable template and these instructions to make a spooky light-up wand for Halloween!

Written By: Andy Wallus



INTRODUCTION

Use the printable template and these instructions to make a spooky light-up wand for Halloween!

You can make this project (and many more!) with our **Paper Circuits Kit**.



TOOLS:

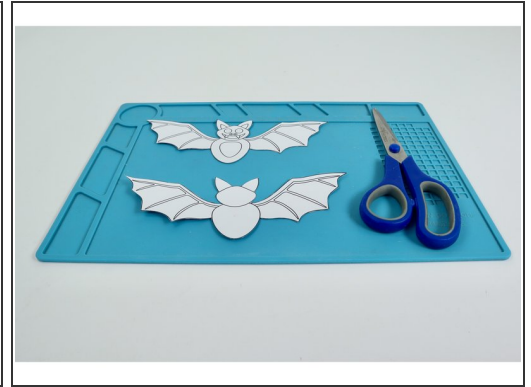
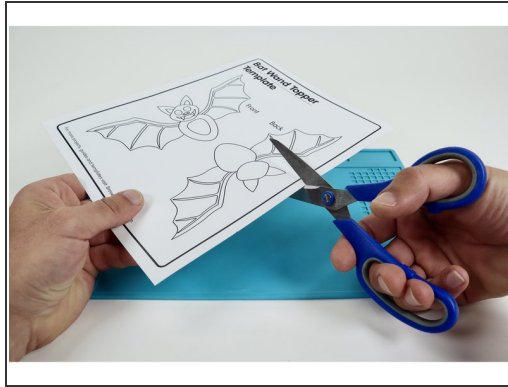
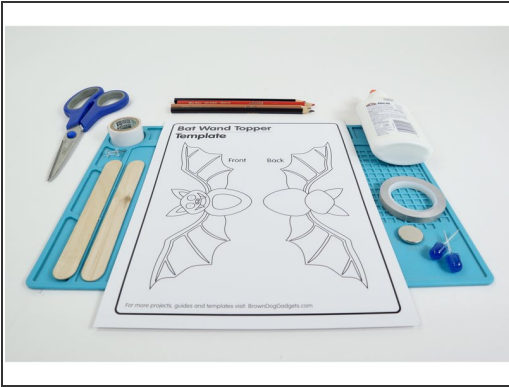
- [Scissors](#) (1)
- [Markers, Crayons, or Colored Pencils](#) (1)
- [Push Pin](#) (1)



PARTS:

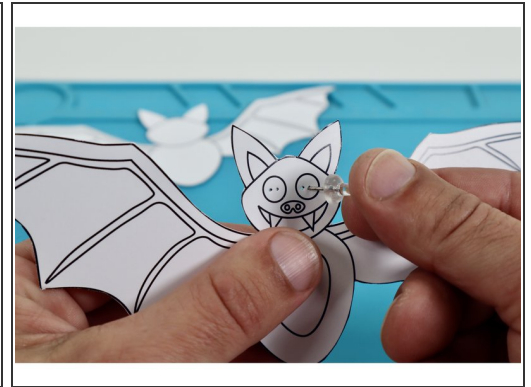
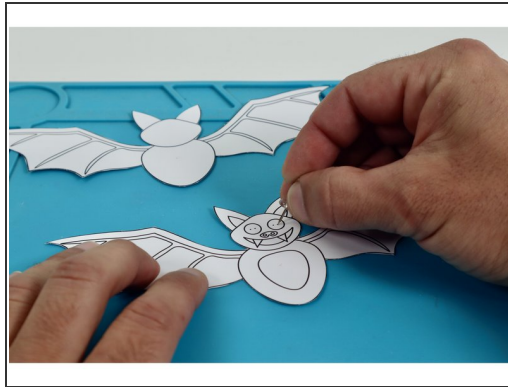
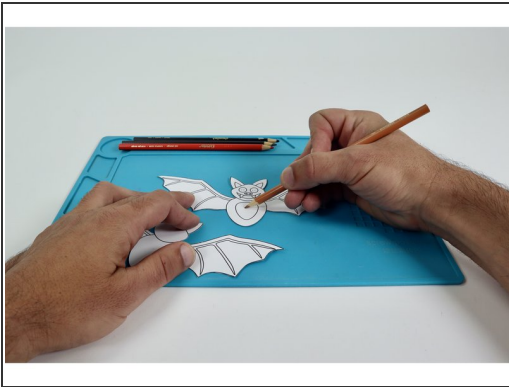
- [Paper Circuits Kit](#) (1)
- [Printable Template](#) (1)
- [Masking Tape](#) (1)
- [Jumbo Craft Sticks](#) (2)
- [Glue](#) (1)

Step 1 — Gather, Print, Cut



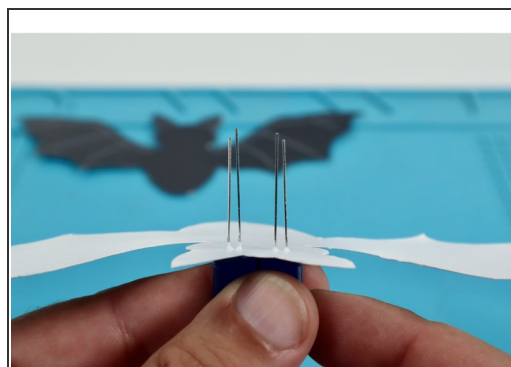
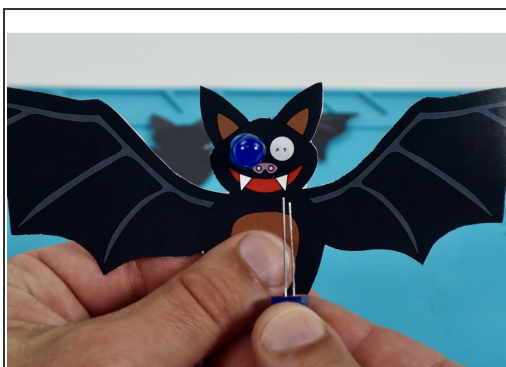
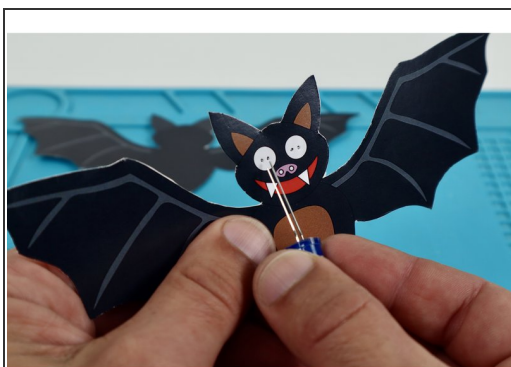
- **Gather all tools and materials** listed/pictured at left.
- After printing the template version of your choice, **use a scissors to carefully cut out the front and back of your bat.**

Step 2 — Poke Holes and Color Bat



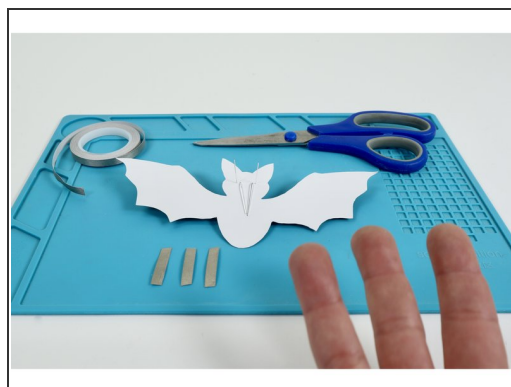
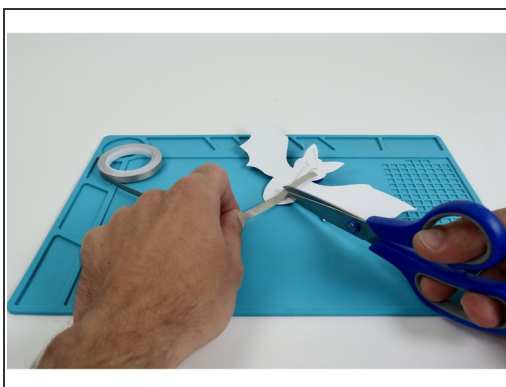
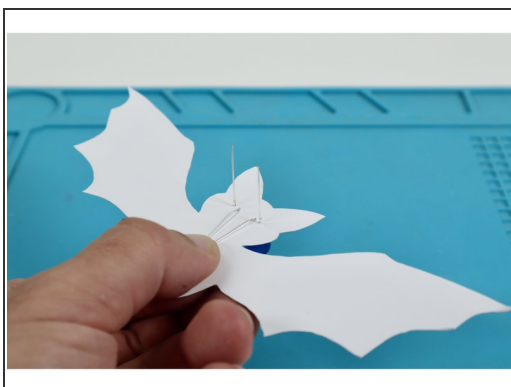
- **Use a push pin to poke out the four small holes** in the areas designated for the bat's eyes.
- **Color both halves of your bat** whichever way you wish!

Step 3 — Thread LEDs



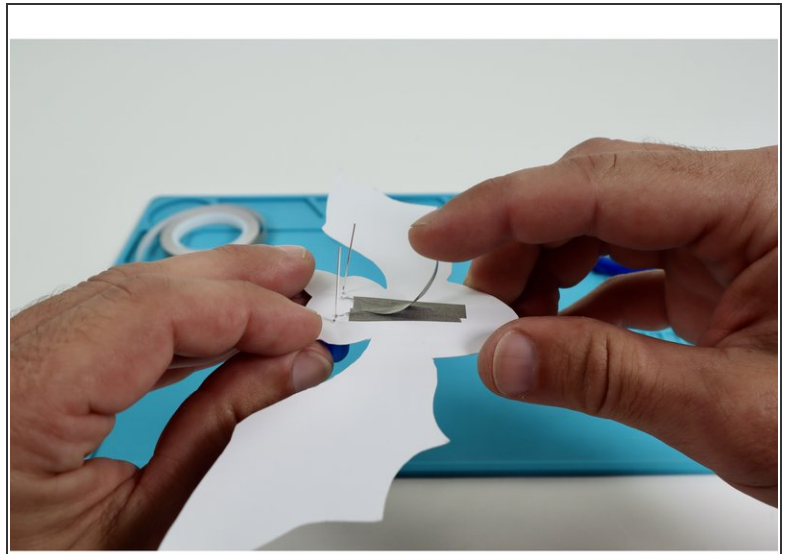
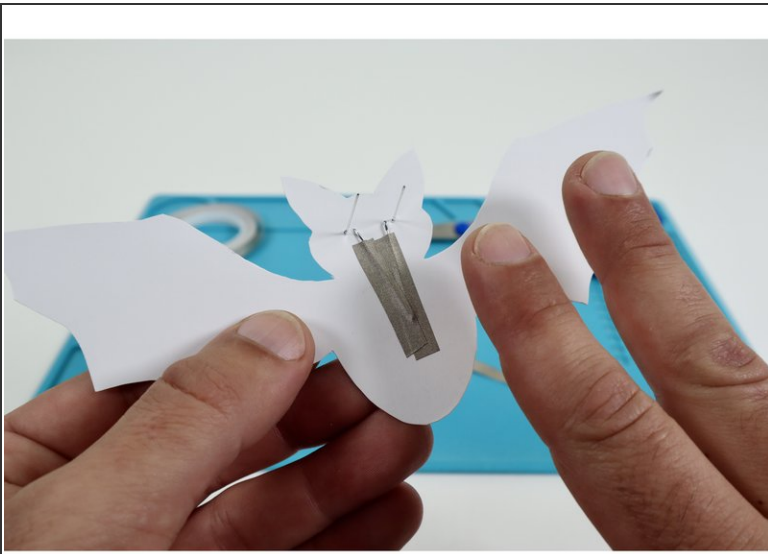
- **Thread each LED through a pair of holes taking care to orient the LED legs as pictured** with the shorter legs toward the outer edges and the long legs through the inner holes nearest the bat's nose.
- **If oriented correctly, the leg length orientation should match photo three.**

Step 4 — Prepare Long LED Legs and Tape



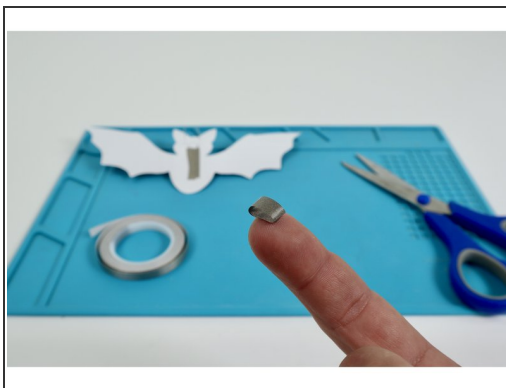
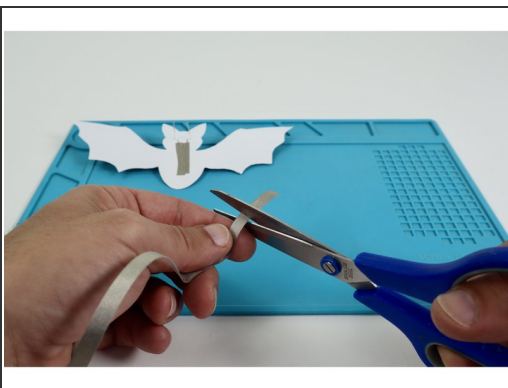
- **Fold the longer inner LED legs flat against the project in a slight "V".**
- **Measure and cut three pieces of Maker Tape** that are approximately the length of the Long LED Legs.

Step 5 — Tape Long LED Legs



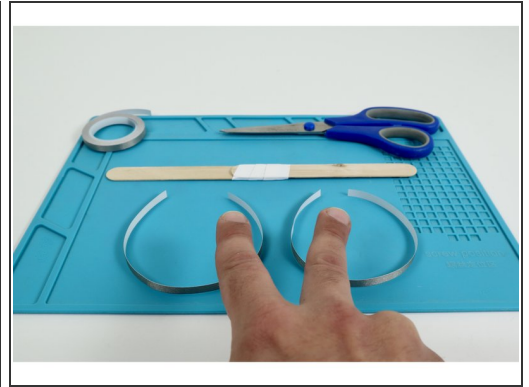
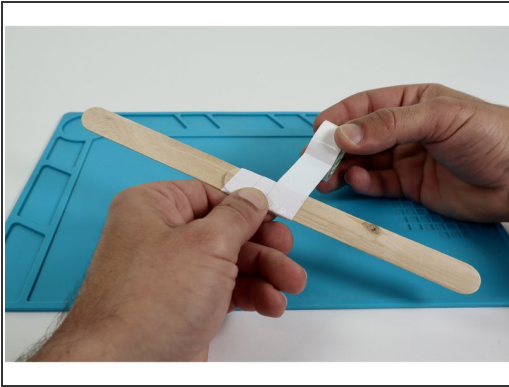
- **Peel and stick** one of your three Maker Tape pieces atop one of the long legs and onto the paper below it.
- **Peel and stick** one of your remaining two Maker Tape pieces atop the remaining long leg and onto the paper below it.
- **Peel and stick** the last piece of Maker Tape as shown in photo two.

Step 6 — Prepare and Place Tape Loop 1



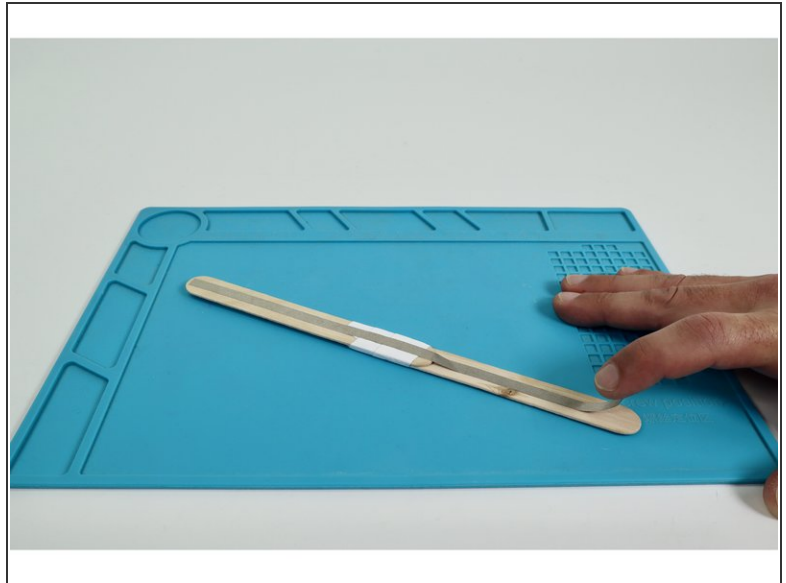
- **Cut a small length of Maker Tape and create a loop "sticky side out".**
- **Place that tape loop** atop the center of the taped area that is now atop the Long LED Legs.

Step 7 — Prepare Wand Handle Elements



- **Use masking tape and join your two jumbo craft sticks** to effectively create one long handle.
- **Measure and cut two separate Maker Tape pieces** that are approximately the length of the wand handle you created.

Step 8 — Place Tape Paths for Wand Handle



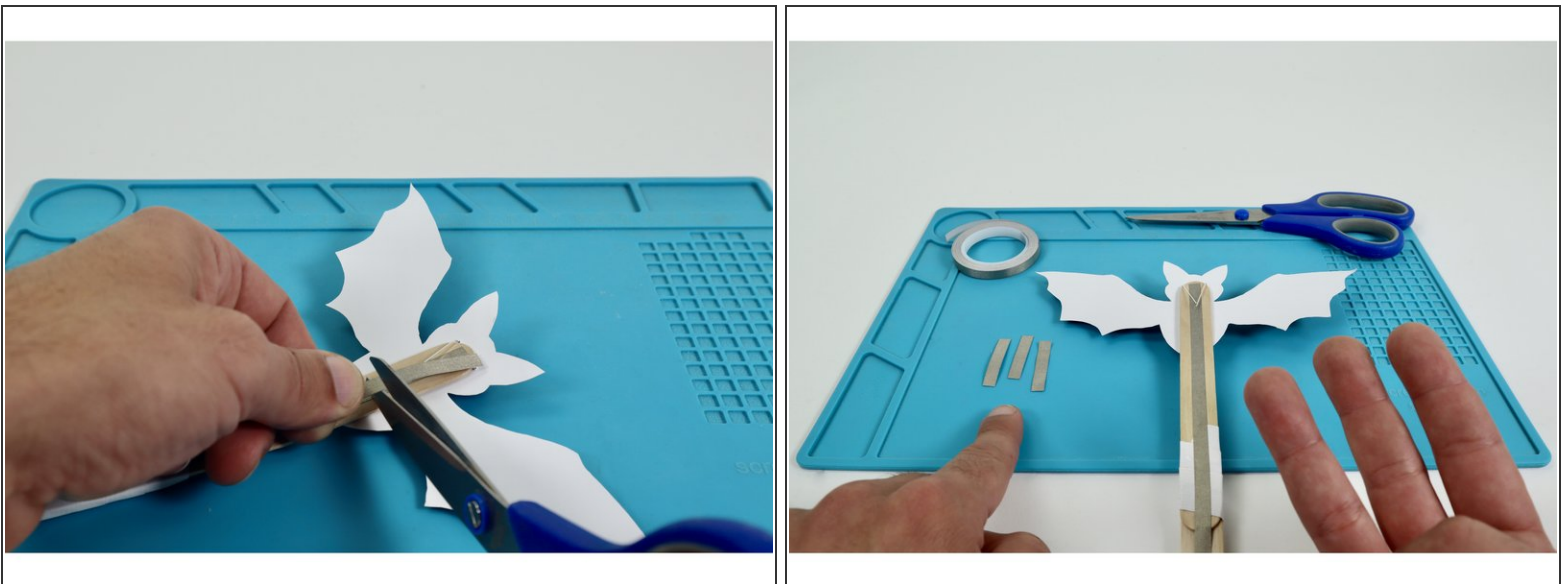
- **Place each of the two long Maker Tape pieces** so they run end-to-end down the middle of each side of the wand handle.

Step 9 — Seat the Handle; Fold Short LED legs



- **Seat one end of the wand handle** between the two outer LED legs and press into place so that the Maker Tape Loop contacts the downward-facing path of the wand handle.
- **Fold the outer (short) LED legs down flat against the upward-facing side of the wand handle in a slight "V".**
- These remaining two LED legs **should now be very near to the upward-facing Maker Tape path that runs the length of the wand handle.**

Step 10 — Prepare Maker Tape Paths



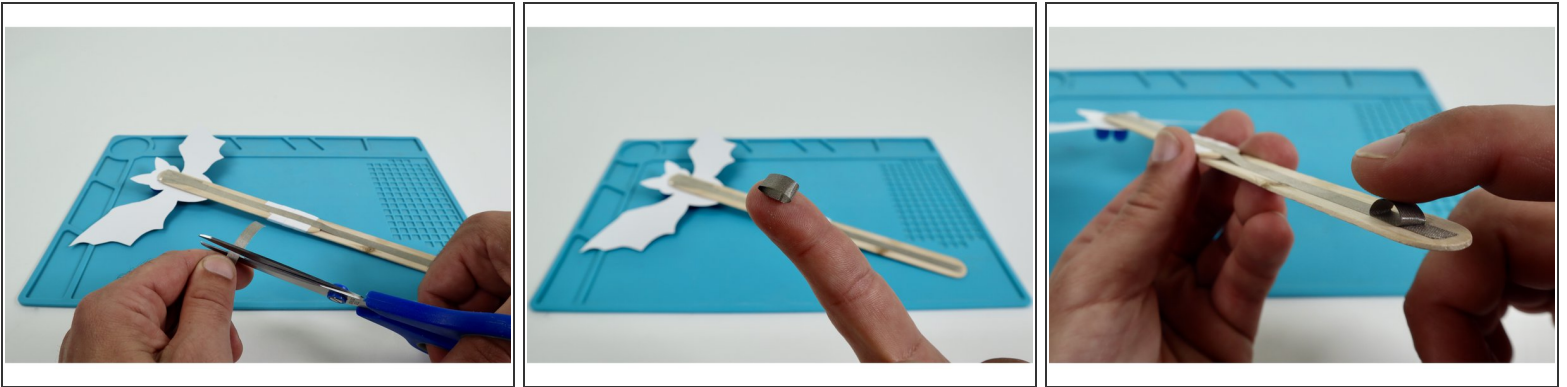
- **Measure and cut three pieces of Maker Tape** that are approximately the same length as the Short LED Legs.

Step 11 — Connect and Secure Remaining LED Legs



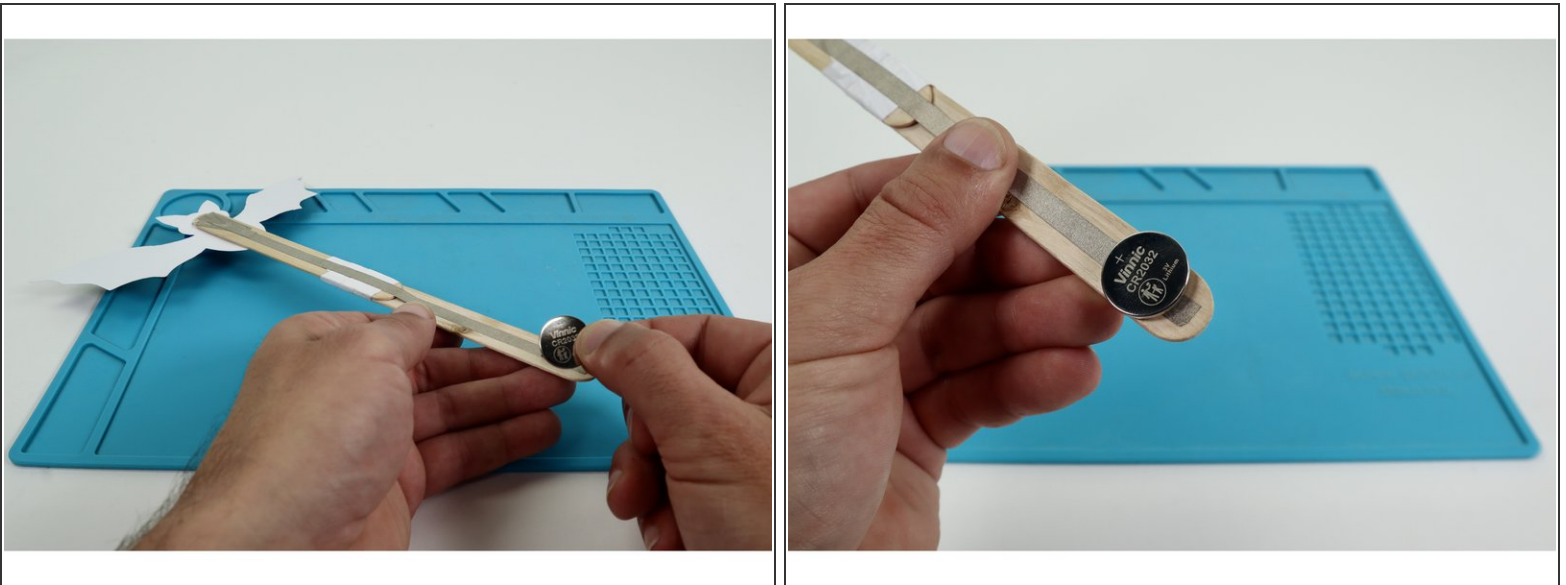
- Using two of your three Maker Tape pieces, stick one atop each of the two LED legs bent flat in the previous step. Press them into contact with the upward-facing long handle path.
- Stick the remaining Maker Tape path down as shown in photo three.

Step 12 — Prepare the Battery Install Area



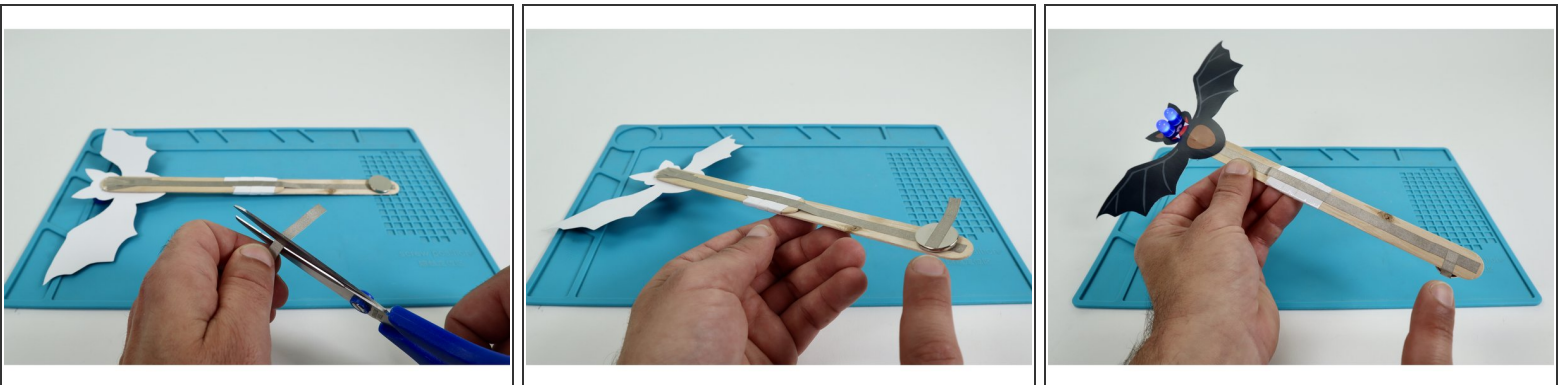
- Cut a piece of Maker Tape and make one final sticky-side-out Maker Tape Loop.
- Stick that tape loop in place atop the far end of the long path from the previous step as shown.

Step 13 — Install the Battery



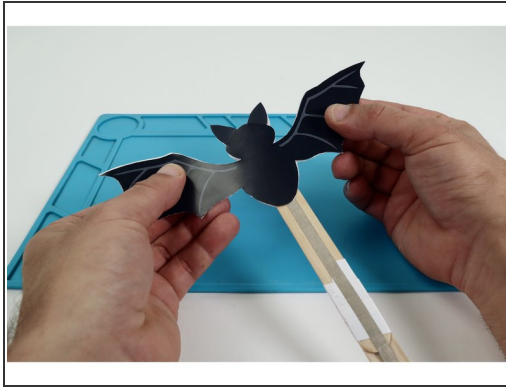
- **Begin the battery installation** by sticking the CR2032 battery atop the tape loop with the positive (+) side facing UP.
- **Note:** At this point, the LEDs should still be dark/off.

Step 14 — Complete the Battery Install



- **Finish installing the battery and turn the LEDs on.** To do this, measure, cut, peel, and stick a piece of Maker Tape that can reach from the top of the battery around to the path on the opposite side of the wand handle.
- **Note:** Once this connection is made, your bat's eyes should turn on.

Step 15 — Seal the Deal



- Use some glue to stick the back panel in place as shown to cover the circuitry.
- Your bat wand is now ready to light up the night!