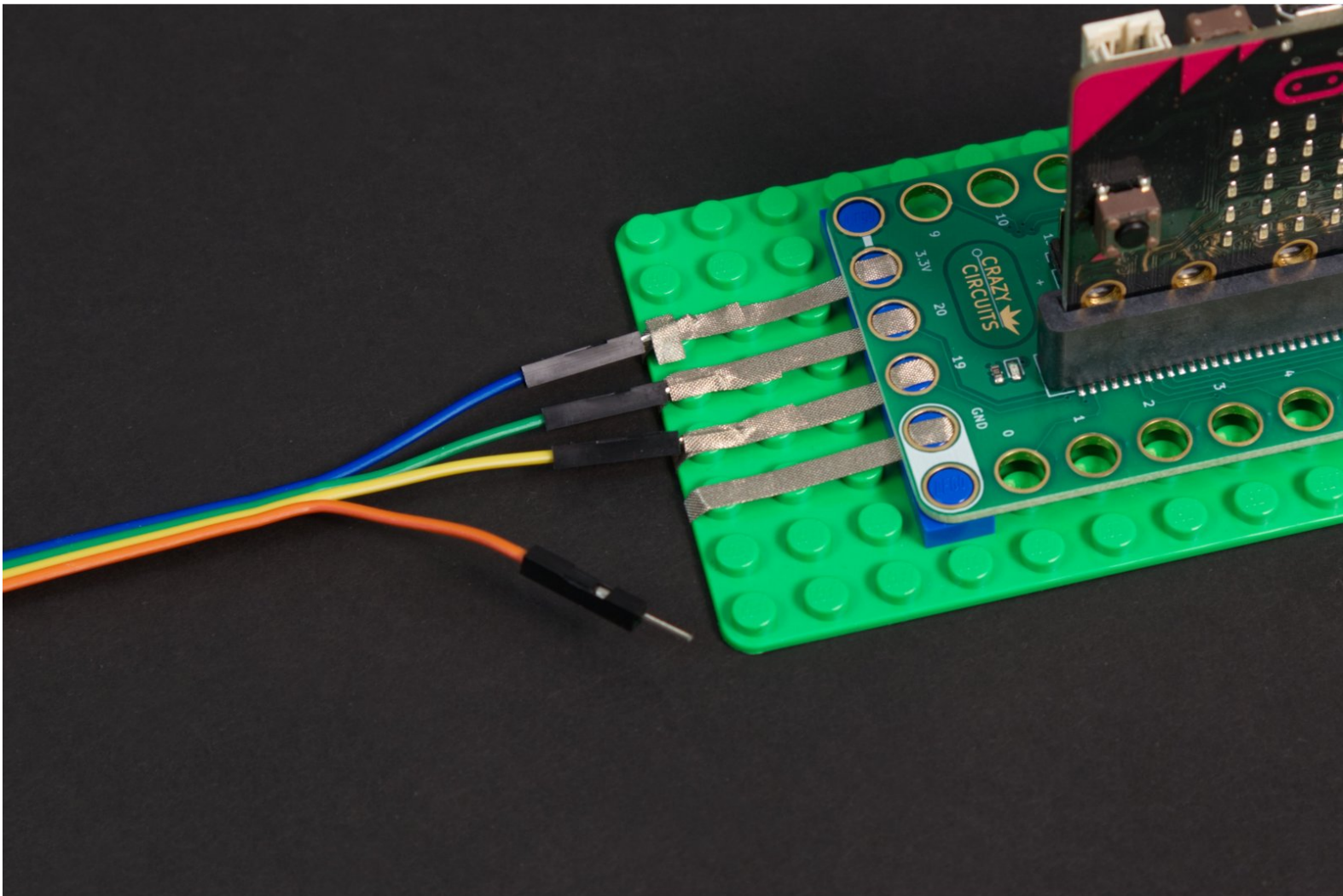




Tape to Wire Connections

Connecting components that are not Crazy Circuits compatible.

Written By: Pete Prodoehl



INTRODUCTION

Crazy Circuits parts are easy to use, and a LEGO baseplate makes building a circuit as easy as tape! But if you want to connect non-Crazy Circuits parts using Maker Tape it's still possible.



TOOLS:

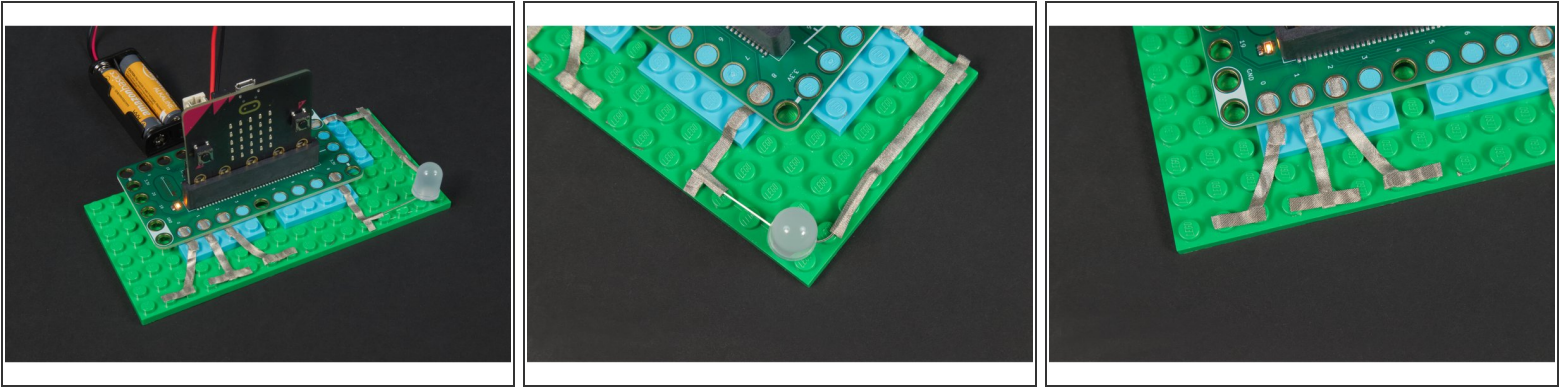
- [Scissors](#) (1)



PARTS:

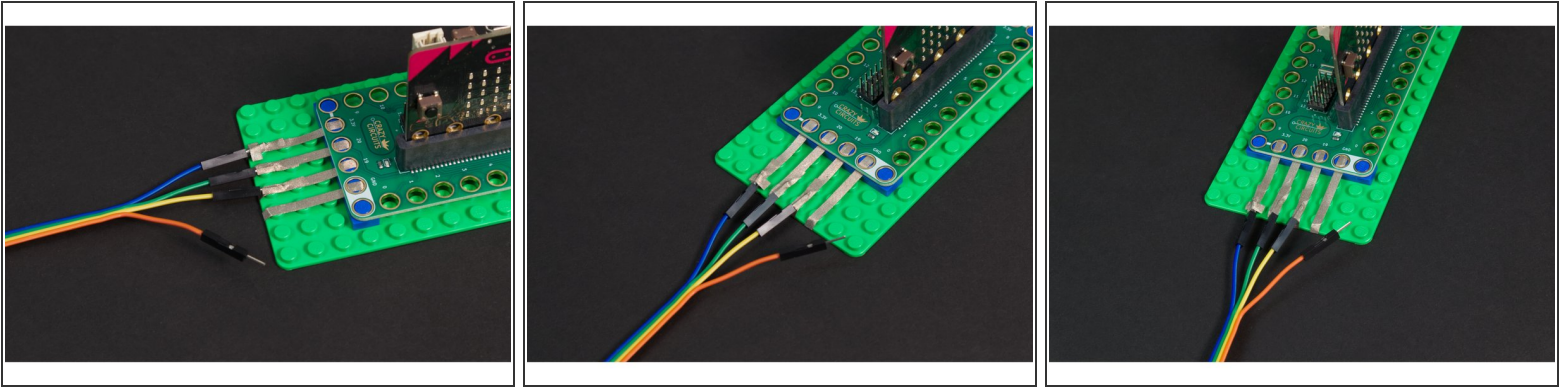
- [Maker Tape](#) (1)
1/8' Wide

Step 1 — Connect Components with Tape



- You can use Maker Tape to connect components with standard leads.
- For an LED you can just bend the legs in the desired direction and tape directly to them.
- ☒ Maker Tape is conductive on both sides, and all the way through.
- If you are using capacitive touch you can create touch pads using Maker Tape.
- Overlapping the tape is a good way to make a larger touch pad.

Step 2 — Connect Tape to Wires

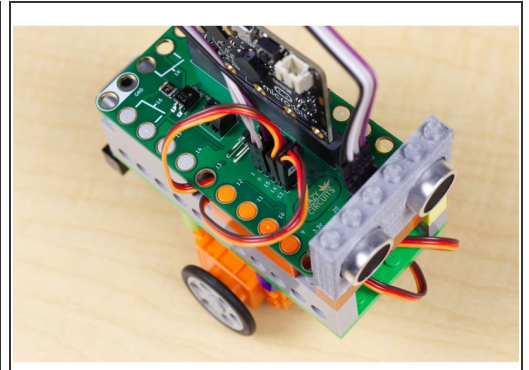
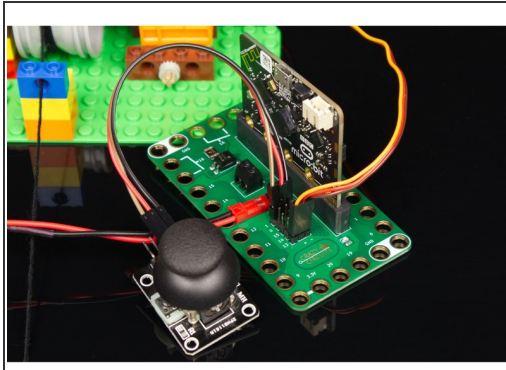
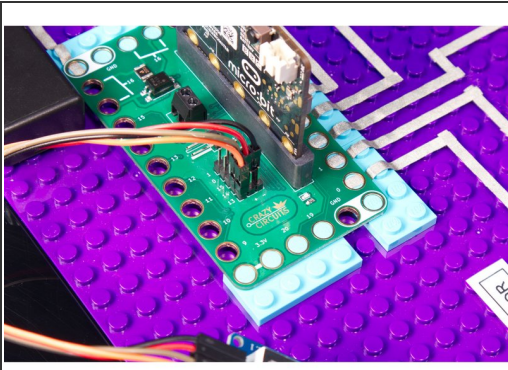


- You can tape directly to wires to connect other components.
- We recommend laying down your Maker Tape first and then wrapping it around the edge to the bottom of the LEGO baseplate.
- Then you can put your wires in place and tape them down to create a good electrical connection.

⚠ You can add more tape if needed, just make sure you do not overlap tape connections between pins!

- ☑ While this method will work, it's not as mechanically secure as using a [Screw Terminal Chip](#), so double-check your connections if your circuit isn't behaving properly. You can always add some non-conductive tape to help hold things in place.

Step 3 — Use the Pin Headers



- Don't forget about the Pin Headers! All of the Crazy Circuits boards have a set of male pins that allow you to connect [Female Jumper Wires](#).
- Many of our own components use Female Jumper Wires plugged into the Pin Headers for easy connection.