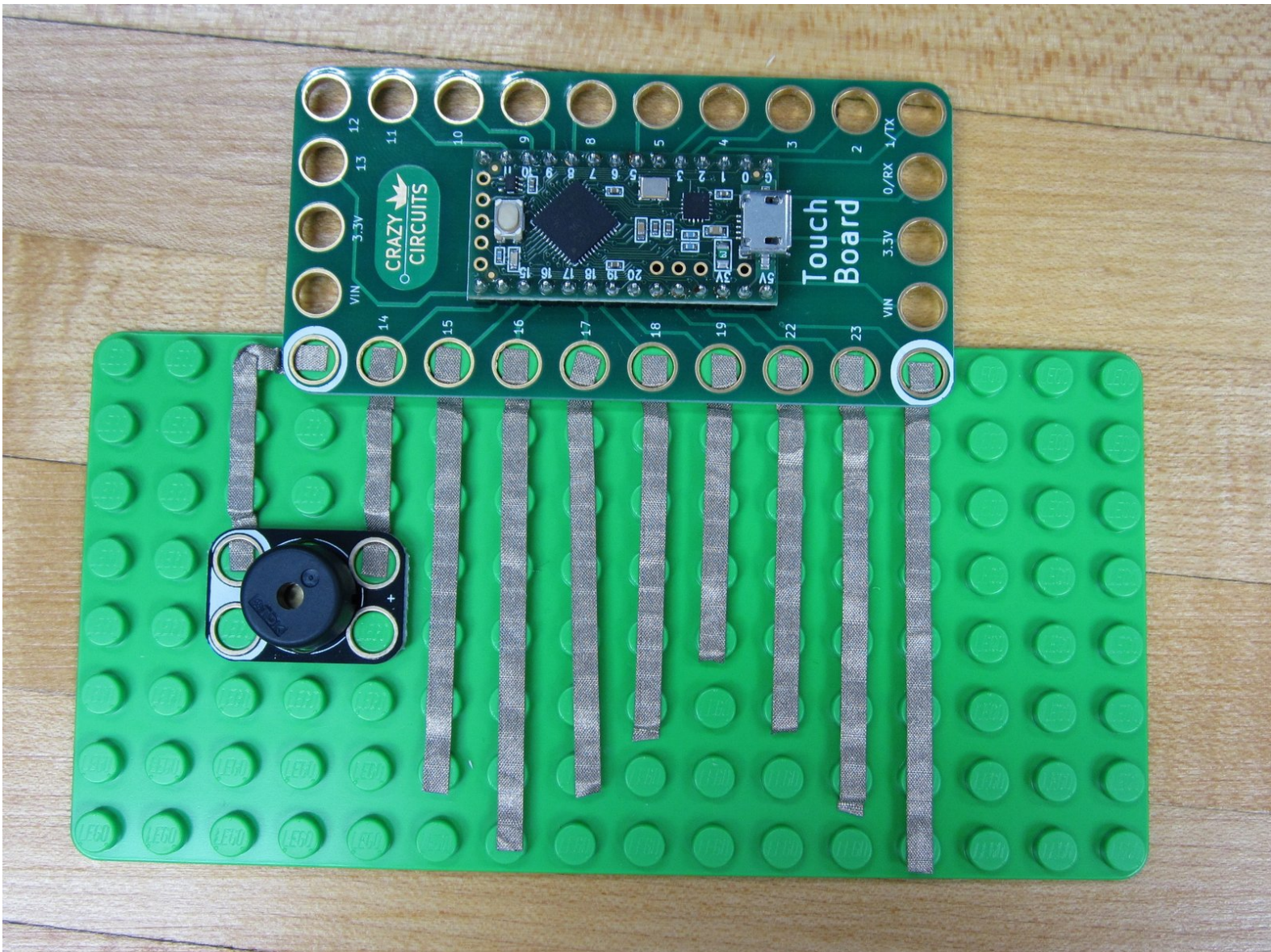




# Simple Touch Piano

Build your own capacitive touch based piano or synth using Crazy Circuits. Works great with conductive paint or Squishy Circuits dough.

Written By: Joshua



## INTRODUCTION

Creating a piano or synth is easy with the Crazy Circuits Touch Board. All you need to do is add in a Piezo Speaker Chip and connect the various Touch Points to something conductive. In this guide we'll be using lines of Conductive Tape as Touch Points, but you can easily use conductive dough (using alligator clips) or Bare Conductive Paint as seen in the video below. For more information on using Conductive Paint to make this project, [check out this guide](#).



### TOOLS:

- [Scissors](#) (1)
- [Computer](#) (1)

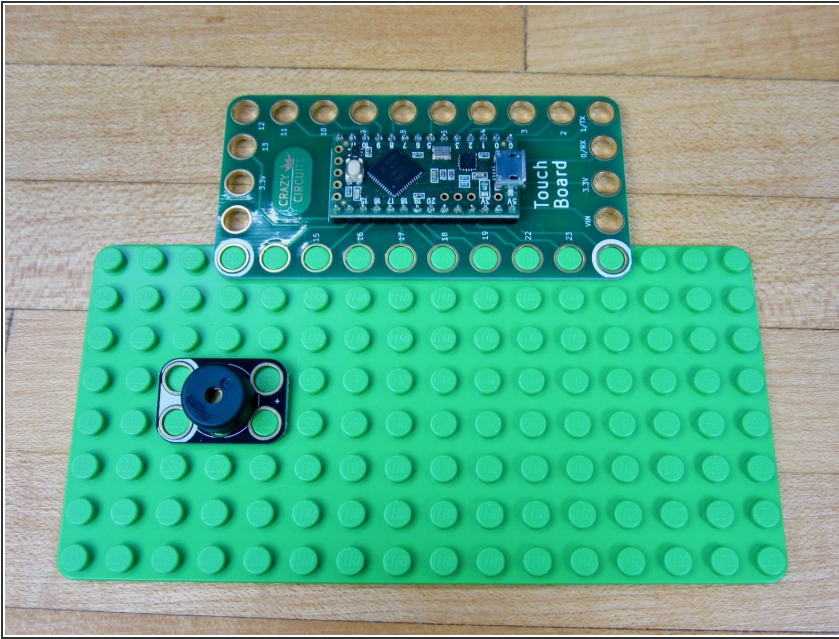


### PARTS:

- [Crazy Circuits with Bare Conductive Paint Kit](#) (1)
- [Crazy Circuits Touch Board](#) (1)
- [Piezo Speaker Chip](#) (1)



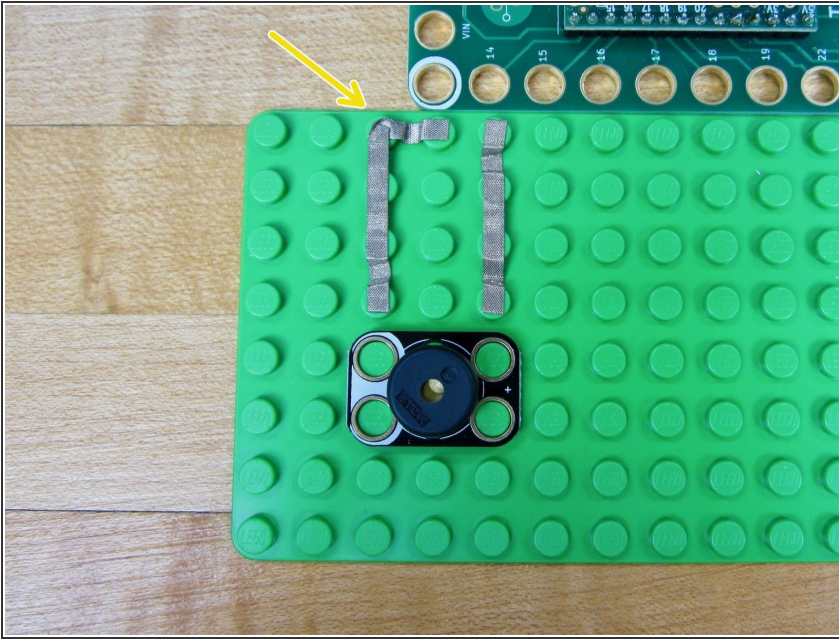
## Step 1 — Lay Out Your Parts



- The layout for the parts is simple, since we're only using two.
- The Touch Board will hang off the end of our Base Plate.
- Our Piezo Speaker Chip needs to be connect to Pin 14 as well as Ground. (Holes surrounded by White are always Ground)
- ① If you want to use a different pin for the Piezo Speaker all you need to do is change a single number in the code.

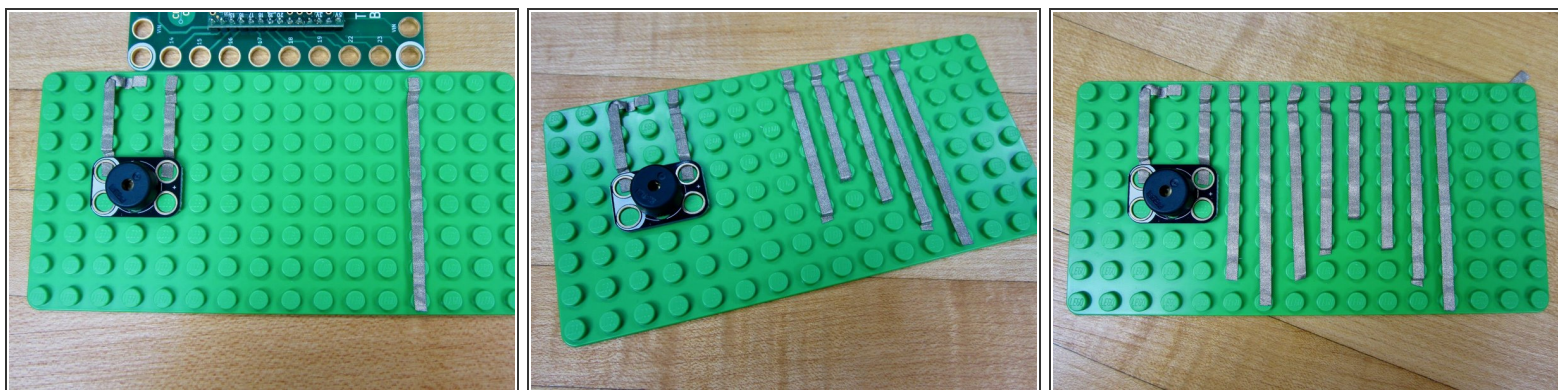
**⚠** Keep your Touch Board reference card nearby. If you're looking to change up any of the pins you'll need to know which ones have Capacitive Touch abilities.

## Step 2 — Connect the Piezo Speaker



- Run a line of tape from Pin 14 to your Piezo Speaker.
- Run a line from Ground (hole with White around it) to the Ground side of your Piezo Speaker. (The side with White on it.)
- We just did a simple right angle turn in order to keep our lines looking clean.

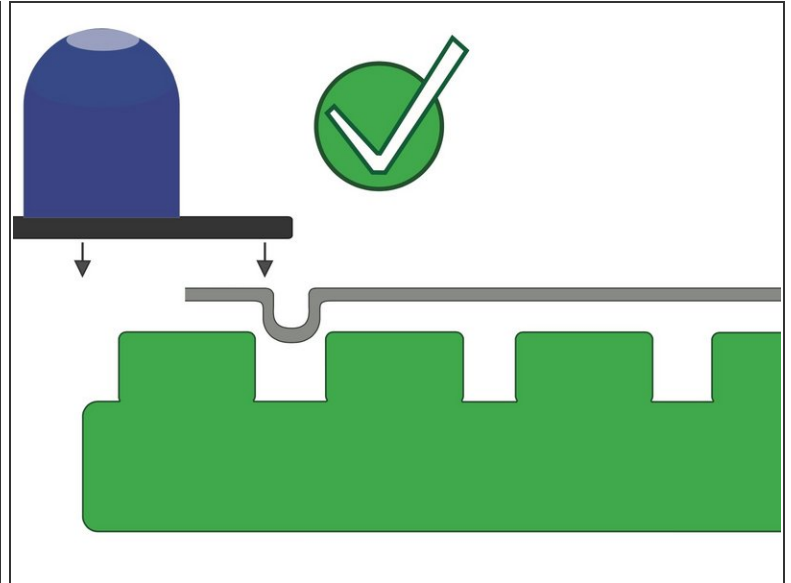
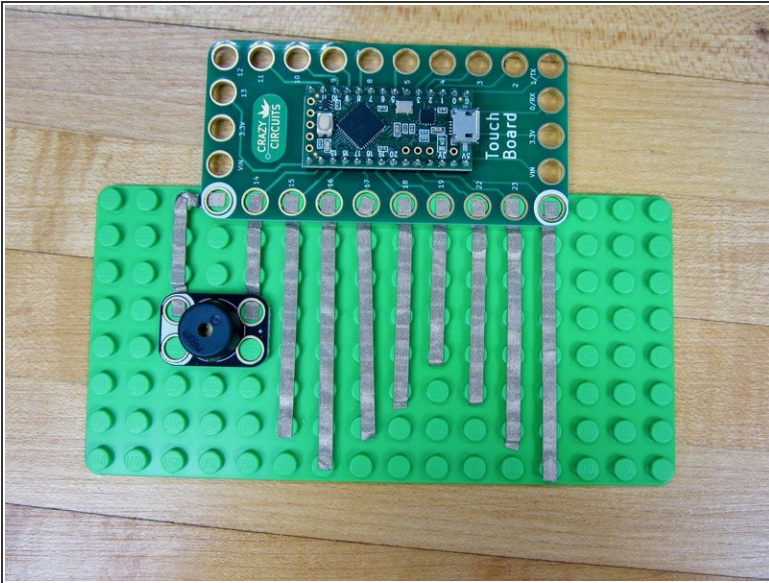
## Step 3 — Create Touch Points



- Anything conductive that's hooked up to one of the Touch Board's Touch Points will activate a note. To keep things easy we're just using some different sized lengths of tape.
- ⓘ The length of our tape is just for looks. Changing the pitch of each Touch Point is done in the code.
- ⓘ In the above video we used long lengths of tape that connected to patches of Conductive Paint. You can also do the same thing with standard Aluminum Tape from a hardware store.
- ⓘ At the end of this write up is a nice diagram showing how we hooked up all 11 Touch Points in our Conductive Paint Piano.
- ⓘ If you're using Conductive Dough, clip Alligator clips to the various Touch Point holes and then connect them to the dough.



## Step 4 — Attach the Touch Board



- Clip your Touch Board over all the lines of tape.
- If the board isn't going on, double check to make sure your tape isn't too long. If you're really having issues give yourself a refresher and read the Basic User Guide.

## Step 5 — Programing the Touch Board

```

1 /*
2  * TeensyPiano.ino
3  *
4  * Brown Dog Gadgets
5  *
6  * Pete Pradoehl <pete@2xlnetworks.com>
7  *
8  * 2017-03-11
9  *
10 * https://www.arduino.cc/en/Tutorial/ToneMelody
11 *
12 */
13
14
15 int touchPinA = 15;
16 int touchPinB = 16;
17 int touchPinC = 17;
18 int touchPinD = 18;
19 int touchPinE = 19;
20 int touchPinF = 22;
21 int touchPinG = 23;
22 int touchPinH = 0;
23 int touchPinI = 1;
24 int touchPinJ = 3;
25 int touchPinK = 4;
26
27 int restA;
28 int restB;
29 int restC;
30 int restD;
31 int restE;
32 int restF;
33 int restG;
34 int restH;
35 int restI;
36 int restJ;
37 int restK;
38
39 int speakerPin = 10; // output pin
40
41 int ledPinCal = 13;
42
43 int pinLevel = 200; // may need adjusting
44

```

★ If you've not used your Touch Board before you should read the [Touch Board User Guide](#). Practice uploading code before doing this project.

- Open up your Arduino Software.
- Download the [Teensie Piano code file](#). (Found at that link.)
- Copy and paste that code into your Arduino software window.

⚠ If you're not changing anything, just upload the code. Otherwise go to the next step to see how we change things up!

## Step 6 — Changing the Piezo Output

```

33 int restG;
34 int restH;
35 int restI;
36 int restJ;
37 int restK;
38
39 int speakerPin = 10; // output pin
40
41 int ledPinCal = 13;
42
43 int pinLevel = 200; // may need adjusting
44
45 void setup() {
46   // Serial.begin(9600);
47   delay(1500);
48   pinMode(ledPinCal, OUTPUT);
49   calibrate();
50 }
51
52
53 void loop() {

```

- For our needs we're going to change the Piezo Speaker to Pin 14. Do this by going to Line 39 in the code and change "int speakerPin = 10;" to "int speakerPin = 14";
- If thats all you're doing, upload the code!

## Step 7 — Changing the Notes

```

66
67  if (valA > (restA + pinLevel)) {
68    // Serial.println(valA);
69    tone(speakerPin, 523);
70  }
71
72  if (valB > (restB + pinLevel)) {
73    // Serial.println(valB);
74    tone(speakerPin, 587);
75  }
76
77  if (valC > (restC + pinLevel)) {
78    // Serial.println(valC);
79    tone(speakerPin, 659);
80  }
81
82  if (valD > (restD + pinLevel)) {
83    // Serial.println(valD);
84    tone(speakerPin, 698);
85  }
86
87  if (valE > (restE + pinLevel)) {

```

```

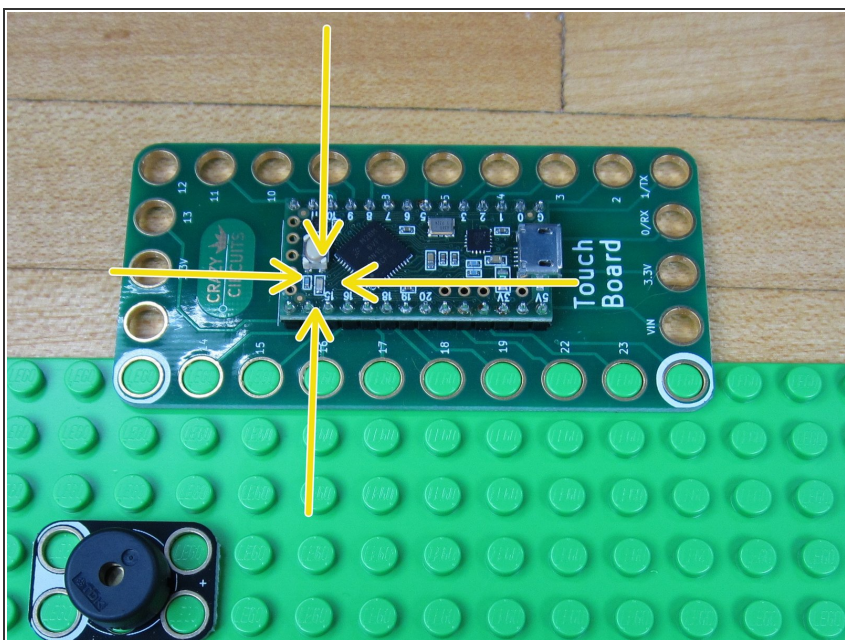
#define NOTE_A3 233
#define NOTE_B3 247
#define NOTE_C4 262
#define NOTE_CS4 277
#define NOTE_D4 294
#define NOTE_DS4 311
#define NOTE_E4 330
#define NOTE_F4 349
#define NOTE_FS4 370
#define NOTE_G4 392
#define NOTE_GS4 415
#define NOTE_A4 440
#define NOTE_AS4 466
#define NOTE_B4 494
#define NOTE_CS 523
#define NOTE_CS5 554
#define NOTE_D5 587
#define NOTE_DS5 622
#define NOTE_E5 659
#define NOTE_F5 698
#define NOTE_FS5 740
#define NOTE_G5 784
#define NOTE_GS5 831
#define NOTE_A5 880
#define NOTE_AS5 932
#define NOTE_B5 988
#define NOTE_C6 1047
#define NOTE_CS6 1109
#define NOTE_D6 1175
#define NOTE_DS6 1245
#define NOTE_E6 1319
#define NOTE_F6 1397
#define NOTE_FS6 1480
#define NOTE_G6 1568

```

- You can change the type of tone (note) that each Touch Point makes by changing number values in the code.
- For example, the code that determines the sound that Pin 15 makes is controlled by the code between lines 67 - 69. (Line 15 says that Pin 15 gets called **touchPinA** in the rest of the code.)
- Specifically: **tone(speakerPin, 523);**
- What this code says is that when the Touch Point of pin 15 is activated, the Piezo Speaker will play a tone at a value of 523 Hertz, or what a musician would call a C note.
- To change the value just change that number. You can find a full list of what musical note corresponds to what Hertz value [on this website](#).
- Once you're done, upload the code.



## Step 8 — Touch Board Auto-Calibration



- Once the code has been uploaded it will run automatically whenever the Touch Board is powered on. This can be from a computer or from a wall USB port.
- When it first turns on it will take 3-5 seconds to **Calibrate**. This means the board is sensing what is attached to the various Touch Points. During this time you should not touch anything.
- The Touch Board shows when it's Calibrating by turning on a small LED in the middle of the Touch Board. Once that LED turns off, you can start to use the piano.

## Step 9 — Trouble Shooting



- Did you let your Touch Board Calibrate for 4-5 seconds when you first plugged it in?
- Did your code upload properly? (Refer to the [Touch Board User Guide](#))
- Is your Piezo Speaker hooked up to the correct pin? Make sure that whatever pin it's physically hooked up to is the same as the pin designated in the code. (Step 6)
- When in doubt, ask a question in our [web forum](#). Post pictures and code to get feedback.

This project is a great crowd pleaser and easy to expand into many formats. Paint, dough, aluminum tape, conductive fabric, cups of water, or even people can be used as Touch Points. Experiment with different materials and find what works best for you.